



# Cardiff Cancer Research Partnership

**Translating  
cancer research  
into better lives  
for patients**



[www.ccrp.org.uk](http://www.ccrp.org.uk)



**GIG  
CYMRU  
NHS  
WALES**

Bwrdd Iechyd Prifysgol  
Caerdydd a'r Fro  
Cardiff and Vale  
University Health Board



**GIG  
CYMRU  
NHS  
WALES**

Ymddiriedolaeth GIG  
Prifysgol Felindre  
Velindre University  
NHS Trust



# Uniting leading academics and clinicians to develop new cancer treatments in Wales



**GIG**  
CYMRU  
**NHS**  
WALES

Bwrdd Iechyd Prifysgol  
Caerdydd a'r Fro  
Cardiff and Vale  
University Health Board



**GIG**  
CYMRU  
**NHS**  
WALES

Ymddiriedolaeth GIG  
Prifysgol Felindre  
Velindre University  
NHS Trust



The Cardiff Cancer Research Partnership is a dynamic collaboration between:

- Cardiff and Vale University Health Board
- Cardiff University
- Velindre University NHS Trust

The Partnership provides a single front door to expertise and facilities spanning haematological and solid cancers - from early discovery phase through to complex and late phase clinical trials.

Our team of expert clinicians and researchers are at the forefront of advancing cancer research and transforming patient outcomes

With strong partnerships across the cancer research community in Wales we are ideally placed to develop the next generation of cancer treatments.

Developing and trialling new drugs and therapies into the NHS is key to delivering better health outcomes for patients in the future.

# Taking Research from Bench to Bedside



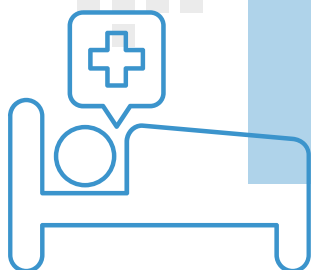
## DISCOVER

create the building blocks of new treatments in the lab

**DEVELOP**  
test new treatments  
in clinical trials



Take NHS samples  
back to the lab to  
develop the next  
generation of  
cancer treatments



**DELIVER**  
improve NHS patient  
outcomes





# Our goals

**Increase Welsh patients' access to cancer research**

*by bringing new clinical trials to Wales*

**Academics and clinicians working in partnership**

*to increase multi organisation research studies and industry funded clinical trials*

**Translate research into new cancer treatments**

*by doing more translational research to take discoveries from the lab to clinical trials*

**Build capacity to carry out complex clinical trials**

*by increasing the number of staff and amount of infrastructure available*

**Grow a future-focused research workforce**

*by increasing the number of clinical academics and making research easier across NHS and academia*

## For industry

The CCRP acts as a single point of entry to research and clinical expertise and facilities at Cardiff and Vale University Health Board, Cardiff University and Velindre University NHS Trust.

## For clinicians and academics

The CCRP can help you build links with clinical and academic researchers across South East Wales. If you work in cancer at a partner organisation, we can help with research funding bids, access to samples, and bringing in new commercial trials.

## Get in touch

**To learn more or discuss support  
for your complex cancer trials or  
translational research studies  
email us:**

**[kate.cleary@wales.nhs.uk](mailto:kate.cleary@wales.nhs.uk)**



**GIG**  
CYMRU  
**NHS**  
WALES

Bwrdd Iechyd Prifysgol  
Caerdydd a'r Fro  
Cardiff and Vale  
University Health Board



**GIG**  
CYMRU  
**NHS**  
WALES

Ymddiriedolaeth GIG  
Prifysgol Felindre  
Velindre University  
NHS Trust